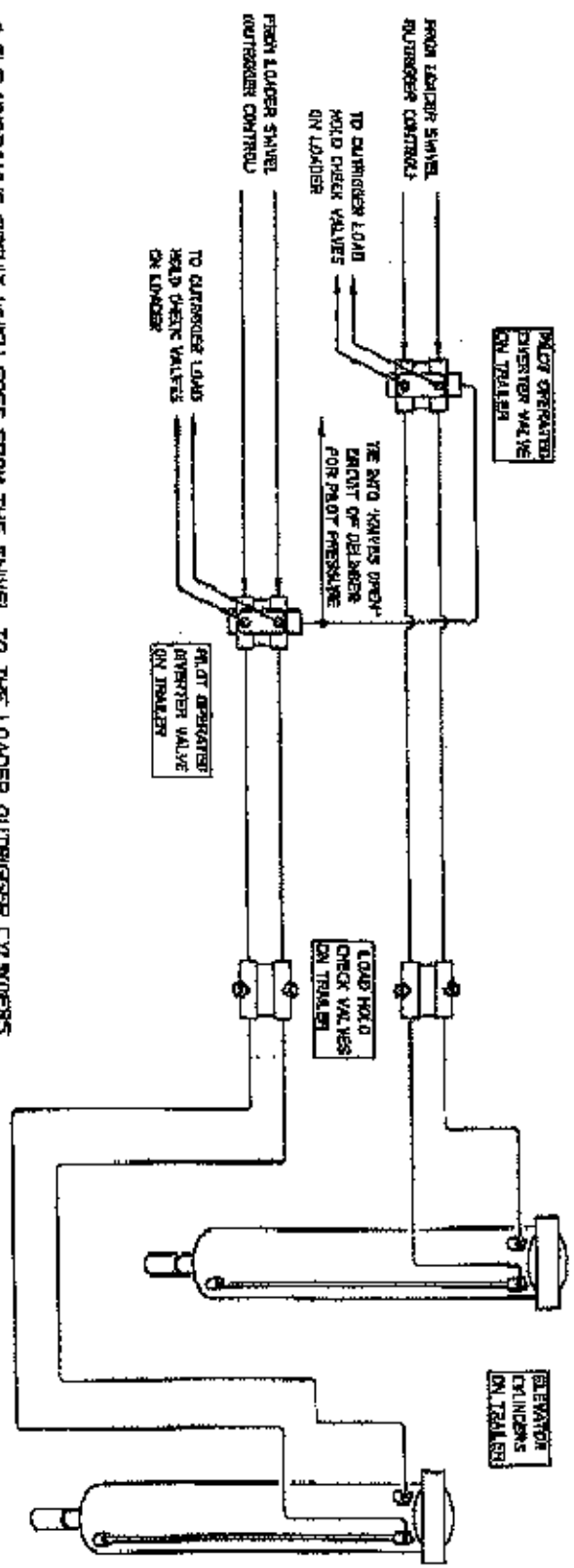


**INSTALLATION INSTRUCTIONS FOR KODIAK TRAILER WITH HYDRAULIC ELEVATORS  
(WHEN EQUIPPED WITH PILOT OPERATED ELEVATOR CONTROLS AND DELIMBER)**



- 1) THE HYDRAULIC CIRCUIT WHICH GOES FROM THE SWIVEL TO THE LOADER OUTRIGGER CYLINDERS WILL BE USED TO OPERATE THE HYDRAULIC ELEVATORS OF THE TRAILER. USE THE (2) OUTRIGGER CYLINDERS THAT ARE THE MOST CONVENIENT TO 'RE-FILLING'
- 2) THE OIL FLOW TO THESE (2) CYLINDERS WILL BE RE-ROUTED THROUGH THE PILOT OPERATED DIVERTER VALVES AS SHOWN ABOVE.
- 3) THE PILOT PRESSURE NEEDED FOR THE DIVERTER VALVES WILL BE GENERATED BY TYPING INTO THE 'KNIVES OPEN' CIRCUIT OF THE DELIMBER.
- 4) WHEN THE DELIMBER KNIVES ARE HELD OPEN PILOT PRESSURE IS GENERATED AND THE DIVERTER VALVES AUTOMATICALLY SHIFT.
- 5) THE OUTRIGGER CONTROLS IN THE LOADER WILL NOW OPERATE THE ELEVATORS ON THE TRAILER.
- 6) WHEN THE DELIMBER KNIVES ARE RELEASED THE DIVERTER VALVES AUTOMATICALLY SHIFT BACK TO THEIR NORMAL POSITION AND ALL OF THE LOADER OUTRIGGERS FUNCTIONS RETURN.